

Speckle tracking echocardiography in cats with arterial thromboembolism

Rozerin ERTUĞRUL^{1,a}, Osman Safa TERZİ^{1,b}, Dođukan ÖZEN^{2,c}, İdil BAŞTAN^{1,d,✉}

¹Ankara University, Faculty of Veterinary Medicine, Department of Veterinary Internal Medicine, Ankara, Türkiye; ²Ankara University, Faculty of Veterinary Medicine, Department of Biostatistics, Ankara, Türkiye

^aORCID: 0000-0001-7338-8788; ^bORCID: 0000-0002-7877-8897; ^cORCID: 0000-0003-1943-2690; ^dORCID: 0000-0003-2588-4036

ARTICLE INFO

Article History

Received : 18.06.2023

Accepted : 03.04.2024

DOI: 10.33988/auvfd.1315788

Keywords

Feline arterial thromboembolism

Hypertrophic cardiomyopathy

Speckle tracking echocardiography

✉Corresponding author

idilbastan@gmail.com

How to cite this article: Ertuğrul R, Terzi OS, Özen D, Baştan İ (2025): Speckle tracking echocardiography in cats with arterial thromboembolism. Ankara Univ Vet Fak Derg, 72 (1), 99-104. DOI: 10.33988/auvfd.1315788.

ABSTRACT

Two-dimensional speckle tracking echocardiography (2D-STE) is a new approach developed for cardiac imaging that provides a better assessment of regional and global myocardial abnormalities than standard echocardiography techniques. The study's goal was to evaluate regional radial strain variables in the left ventricle using 2D-STE in cats with ATE. The research included ten clinically healthy cats (the control group) and ten cats with ATE (the study group). Cats with ATE which diagnosed with hypertrophic cardiomyopathy (HCM) were divided into both intraventricular septum (IVS) and left ventricular (LV) hypertrophy (IVS-HCM, n:5) and only LV free wall hypertrophy (LV-HCM, n:5) groups. Compared to the control group, cats in the LV-HCM and IVS-HCM groups had a thicker IVSd. LVPWd were considerably higher in the LV-HCM group than in both the IVS-HCM and the control group (8.04 ± 0.93 , 4.9 ± 0.4 , and 3.91 ± 0.17 , respectively, $P < 0.001$). Mid-posterior (MP) strain values in cats with IVS and LV hypertrophy were significantly lower than in the control group (both $P < 0.05$). Values from mid-lateral (ML) were significantly lower than in the control group (both $P < 0.05$). Our results showed that MP strain values decreased in the LV. Increased IVS and LVPW wall thickness is associated with a depressed MP strain in cats with HCM. Increased IVS wall thickness is related to low MP and strain values in cats with HCM.

Introduction

Feline arterial thromboembolism, which is linked to a high mortality rate, is a serious complication of myocardial disease (4, 5). ATE is strongly associated with a prominent prevalence of cardiac disease, and all forms of cardiomyopathy pose a risk for ATE (25). Some cats do not show any clinical signs of cardiac disease and have a normal lifespan (22). An impressive number of cardiomyopathies show not typical echocardiographic changes that are considered 'unclassified' cardiomyopathy (UCM) characterized by ATE and sudden death (4). Recent research has shown that a significant number of asymptomatic and mildly symptomatic HCM patients exhibit varied amounts of patchy myocardial fibrosis in the left ventricular myocardium, even in the context of preserved ejection fraction (EF) (9). In HCM, there are uncontrolled cellular changes and growth at the site of hypertrophy, which is

characterized by cell loss, a typical pattern disorder, and irregular replacement fibrosis (11, 17). Less is known about the pattern of myocyte disarray and fibrosis, as well as its clinical and pathophysiologic relevance (1, 15, 16).

Two-dimensional speckle tracking echocardiography (2D-STE) is a recently developed approach to cardiac imaging designed to assess myocardial deformation and velocity parameters such as strain (St) and strain rate (StR). No angle-dependence 2D-STE provides an assessment of all segments of the heart. In addition, this technique allows improved measurement of localized and global cardiac deformations compared to conventional echocardiography techniques (3). 2D-STE has been reported for the evaluation of cardiac function in humans with HCM (6, 7, 12), dogs (8, 31), and cats with HCM (27). The latest studies have demonstrated that asymptomatic and mildly symptomatic patients with hypertrophic cardiomyopathy have variable areas of

patchy myocardial fibrosis in the left ventricular myocardium. However, no previous studies in cats with feline arterial thromboembolism (ATE) have used 2D-STE to assess myocardial function. The objective of the study was to evaluate the regional radial strain characteristics of the left ventricle (LV) in cats with ATE utilizing 2D-STE.

Materials and Methods

Animals: The study groups included 10 client-owned cats with ATE. Ten clinically healthy cats (the control group) were presented to the Small Animal Hospital, Veterinary Faculty, Ankara. The most common breed was the tabby cat (12/20), followed by mixed breed (5/20), and siamese (3/20). Cats with HCM were further divided into IVS hypertrophy without LV free wall hypertrophy (IVS-HCM, n:5) and only LV free wall hypertrophy (LV-HCM, n:5) groups. Cats in the control group were determined to be clinically healthy based on history, auscultation, thoracic radiographs, physical examination, echocardiographic examination, CBC, and serum biochemical profiles.

The diagnosis of ATE was based on history and clinical signs of limb paralysis of acute onset (<24 hours from the onset of clinical signs) with at least four of the clinical symptoms listed below: Sudden onset of lameness, plegia, or paralysis in the afflicted limbs; absence of dorsal pedal pulse verified by absence of doppler signal; paleness or cyanosis of the foot pads or nail bed in the affected limb(s); low rectal temperature (<37 °C); and reduced motor neuron symptoms in at least one limb (18).

Exclusion criteria included no evidence of pulmoner neoplasia on radiography, the presence of hyperthyroidism, clinical evidence of bleeding, hypoalbuminemia, a platelet count <50,000/ml, and a history of chronic paresis or paralysis. At the time of recruitment, none of the cats in the study were getting any medication.

Echocardiographic Examination: Standard 2D, M-mode, and doppler blood flow measurements were performed on restrained, laterally recumbent cats using an ultrasound (Hitachi, Arietta V60) unit equipped with 5.5–7.5 MHz phased-array transducers as previously described and validated (19).

End-diastolic dimension (IVSd) of the interventricular septum, end-diastolic inside diameter of the left ventricle (LVIDd), left ventricular free (posterior) end-diastolic thickness, end-systolic thickness of the interventricular septum (IVSs), end-systolic diameter of the left ventricle (LVIDs), left ventricular free (posterior) end-systolic thickness (LVPWs), heart rate (HR), end-diastolic volume (EDV), end-systolic volume (ESV), stroke volume (SV), cardiac output (CO), and ejection fraction (EF) were measured in the standard right parasternal short-axis view at the level of the chordae tendineae. Then the LV shortening fraction (FS) was calculated using M-Mode.

An M-mode echocardiographic examination was used to detect HCM in cats with an IVSd and/or LVPWd of 6 mm or above.

Statistical Analysis: For each variable, descriptive statistics were computed. As parametric test assumptions, variables were assessed with the Shapiro-Wilk test for normality and the Levene test for variance homogeneity prior to hypothesis testing. The Kruskal-Wallis test was used to test the difference between IVS-HCM, LV-HCM, and control groups since the variables violated the assumptions associated with parametric distribution. A Dunn-Bonferroni post hoc test was performed after any significant difference. The Fisher-Freeman-Halton test was used to test the frequency distribution of gender among groups. The level of significance was set at $P < 0.05$. All statistical analyses were calculated using SPSS 21 statistical software.

Results

The clinical features of the twenty cats that enrolled in the study were presented in Table 1. Age, sex and body weight showed no significant differences among the groups.

Cats in the LV-HCM and IVS-HCM groups had thicker IVSd in comparison with control group. LVPWd were significantly higher in LV-HCM group than in both IVS-HCM and control group (8.04 ± 0.93 , 4.9 ± 0.4 , 3.91 ± 0.17 respectively, $P < 0.001$). EF values were not statistically significant between the groups. Echocardiographic values of both groups are summarized in Table 2.

Table 1. Characteristic of IVS-HCM, LV-HCM and control groups.

Parameters		IVS-HCM (n:5)	LV-HCM (n:5)	Control (n:10)	P
Gender (female/male)	(n/n)	(3/2)	(2/3)	(4/6)	0.85
Age (months)	Mean \pm SEM	49.2 \pm 5.54	56.5 \pm 3.78	53.2 \pm 3.12	0.713
	Median (Q1-Q3)	48 (46-54)	55 (54-60)	53.5 (47.5-59.3)	
Body weight (kg)	Mean \pm SEM	4.02 \pm 0.25	3.96 \pm 0.27	3.98 \pm 0.25	0.996
	Median (Q1-Q3)	4.2 (3.7-4.3)	4 (3.6-4.2)	4.05 (3.8-4.2)	

SEM: Standard Error of mean, Q1: 25th percentage, Q3: 75th percentage.

Table 2. Results of M-Mode echocardiography indices in IVS-HCM, LV-HCM, and control group.

Parameters	IVS-HCM (n:5)		LV-HCM (n:5)		Healthy (n:10)		P
	Mean + SEM	Median (Q1 - Q3)	Mean + SEM	Median (Q1 - Q3)	Mean + SEM	Median (Q1 - Q3)	
IVSD (mm)	6.18 ± 1.05	6.2 (3.3 - 9) ab	6.74 ± 0.48	6.6 (5.2 - 8) a	4.59 ± 0.7	4.05 (2.8 - 10.6) b	0.049
LVIDd (mm)	13.98 ± 1.26	14.3 (10.8 - 17)	12.8 ± 1.74	14.1 (6 - 15.8)	13.4 ± 0.37	13.4 (11.1 - 15.2)	0.742
LVPWd (mm)	4.9 ± 0.4	5 (3.5 - 5.8)b	8.04 ± 0.93	7.8 (6.1 - 11.5)a	3.91 ± 0.17	3.95 (3.1 - 4.9)b	<0.001
IVSs (mm)	6.98 ± 0.19	6.9 (6.4 - 7.4)	7.9 ± 0.53	8.1 (5.9 - 8.9)	6.47 ± 0.55	5.85 (4.7 - 10.8)	0.067
LVIDs (mm)	7.64 ± 1.35	7.8 (4.1 - 11.2)	5.04 ± 1.04	5 (1.9 - 7.8)	6.9 ± 0.5	6.6 (5.3 - 10.5)	0.173
LVPWs(mm)	6.7 ± 0.23	6.8 (5.9 - 7.3)b	10.26 ± 1.27	8.5 (8 - 14.1)a	6.9 ± 0.41	6.65 (5.6 - 10)b	0.004
HR (BPM)	184.8 ± 8.84	183 (158 - 206)	192.2 ± 10.59	191 (169 - 220)	187.5 ± 17.19	169.5 (140 - 318)	0.961
EDV (ml)	5.36 ± 1.19	5.4 (2.5 - 8.4)	4.54 ± 1.08	5.1 (0.5 - 6.9)	4.58 ± 0.32	4.55 (2.8 - 6.3)	0.723
ESV (ml)	1.26 ± 0.5	1 (0.2 - 2.8)	0.42 ± 0.19	0.3 (0 - 1)	0.85 ± 0.19	0.65 (0.4 - 2.4)	0.265
SV (ml)	4.1 ± 0.96	2.6 (2.4 - 6.5)	4.12 ± 1.08	4.5 (0.4 - 6.9)	3.75 ± 0.22	3.85 (2.4 - 4.7)	0.799
CO (l/m)	0.76 ± 0.19	0.54 (0.41 - 1.29)	0.75 ± 0.18	0.86 (0.08 - 1.17)	0.71 ± 0.09	0.72 (0.38 - 1.37)	0.962
EF (%)	78.46 ± 8.01	86.2 (48.4 - 93.1)	86.34 ± 4.98	86.8 (73.3 - 99.7)	82.73 ± 2.79	86.4 (62.4 - 91)	0.704
FS (%)	46.42 ± 6.89	52.2 (22 - 61.8)	57.1 ± 9.1	52.6 (37.2 - 87.9)	48.81 ± 2.7	51.8 (30.8 - 58.5)	0.442

a,b: Different letters in the same row represents statistical significance (P<0.05).

Using 2D-STE, systolic radial strain values from the parasternal short-axis views at the mid-papillary muscle level in ATE and control groups were obtained. 2D-STE variables were assessed from 6 separate sections; MAS (mid anteroseptal), MA (mid anterior), ML (mid lateral), MP (mid posterior), MI (mid inferior), MS (mid septal)

(Figure 1, Figure 2). The radial 2D-STE exam results among groups are summarised in Table 3. MP value in both LV-HCM and IVS-HCM groups was significantly lower than in the control group (both P<0.05). ML value was statistically lower in both IVS-HCM and LV-HCM group compared to the control group.

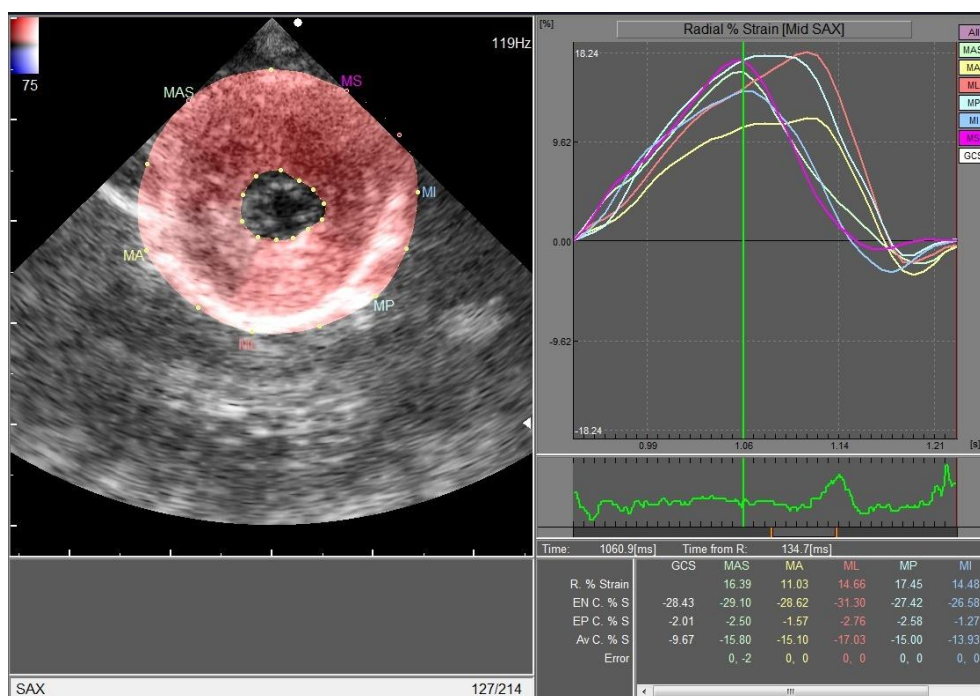


Figure 1. A snapshot of peak systole taken at the short-axis papillary muscle level of one of the control cats. It is understood from the strain data and graph shown in red that contraction is sufficient in 6 different regions; MAS (mid anteroseptal), MA (mid anterior), ML (mid lateral), MP (mid posterior), MI (mid inferior), MS (mid septal).

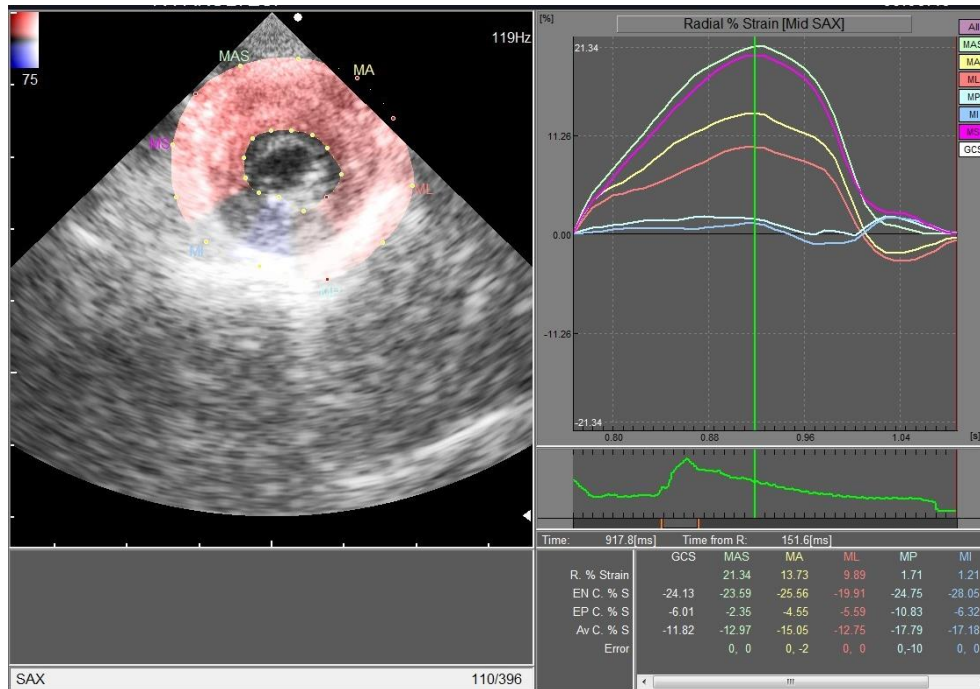


Figure 2. 2-D Speckle tracking echography of left ventricle in a cat with HCM. The color change in the MP and MI regions shows that the strain values are low and the contraction is insufficient in these regions.

Table-3 Peak systolic radial strains assessed by 2-dimensional speckle-tracking echocardiography in IVS-HCM, LV-HCM and control groups.

Parameter	IVS-HCM (n:5)		LV-HCM (n:5)		Healthy (n:10)		P
	Mean + SEM	Median (Q1 - Q3)	Mean + SEM	Median (Q1 - Q3)	Mean + SEM	Median (Q1 - Q3)	
MAS	13.16 ± 3.64	13.04 (2.51 - 21.34)	16.96 ± 4.22	19.24 (3.59 - 28.88)	15.88 ± 3.49	18.55 (-5.23 - 27.92)	0.754
MA	8.72 ± 3.72	3.57 (2.5 - 21.03)	14.89 ± 3.76	14.46 (7.11 - 27.98)	15.54 ± 3.94	18.58 (-12.29 - 29.37)	0.231
ML	7.83 ± 3.51	9.89 (-0.6 - 16.59)b	9.49 ± 4.49	6.11 (0.73 - 24.56)b	17.99 ± 2.01	17.05 (6.36 - 28.54)a	0.048
MP	9.37 ± 4.32	6.11 (0.01 - 21.87)b	7.17 ± 2.46	5.61 (-0.19 - 13.09)b	19.82 ± 2.73	17.15 (11.38 - 35.23)a	0.031
MI	10.96 ± 4.23	8.59 (1.21 - 24.66)	7.57 ± 4.03	7.51 (-6.28 - 16.42)	15.59 ± 2.82	14.55 (1.47 - 33.4)	0.276
MS	13.41 ± 2.43	13.02 (5.49 - 20.33)	14.23 ± 5.05	19.69 (-3.24 - 24.59)	16.82 ± 1.96	17.15 (6.05 - 24.16)	0.672

a,b: Different letters in the same row represents statistical significance (P<0.05).

Discussion and Conclusion

To our knowledge, this is the first study to measure radial strain of the LV in cats with ATE using 2D-STE. We found that systolic MP strain were significantly lower in cats with ATE than in healthy cats. Also, ML value was statistically lower in IVS-HCM compared to healthy cats.

Earlier 2D-STE investigations of cats have shown that global and segmental longitudinal strain were considerably lower in asymptomatic and symptomatic cats with HCM compared with healthy cats (13, 26, 28). Radial deformations play a significant role on the deterioration pumping function of the heart in both cats and humans with HCM (18, 19, 28, 30) and in subclinical patients with cardiovascular risk factor. Circumferential shortening compensates for LV myocardial contractions that are impaired longitudinally (29). One of the most appealing findings of our study is the differences in regional strain

of LV. This can be explained by the fact that in HCM myocardial fibrosis occurs anywhere along the myocardial wall. HCM cases are frequently considered to exhibiting regional heterogeneity of contractility which may be explained by regional variations in strain value (14, 21, 24). Sugimoto et al. found that decreased longitudinal strain in cats with both segmental and diffuse hypertrophy (26). The present study showed that STE parameters were low in IVS-HCM and LV-HCM group. An explanation for this phenomenon could be that myofiber disarray (9, 28) and interstitial fibrosis (18, 19, 30), which are mostly located in the mid third of the ventricular wall. Fibrosis affects strain independently of the effects of regional wall thickness. For demonstrating LV wall thickness conventional echocardiography examinations may not reflect myocardial fibrosis, while strain variables indicate the severity of fibrosis in humans with HCM (22, 23).

In this study posterior wall strain was low in cats with ATE. Sasaki et al. showed that grayscale imaging allowing assessment of regional systolic function in the posterior or lateral wall was affected earlier compared with the other segments in human patients (23). The fibers in the inferolateral region pulled by other previously activated myocardial segments may cause further stretching of the fibers before they begin to shorten. The lateral wall with a high regional radius of curvature contributes to increased regional tension. If dystrophin is absent, increased stress may cause earlier muscle damage (2, 10). Further studies are needed to explain regional fibrosis in cats.

Left ventricular thrombus (LVT) forms as a consequence of three factors of Virchow's triad included stasis of flow, hypercoagulability and wall damage (10). A damaged myocardium may trigger all three steps in Virchow's triad, and aggravate the low-flow in the different regions of LV (2). Olsen et. al. found that decreased apical and midventricular strain values are potential risk factors for LVT formation (20). ATE might be explained by decreased strain in left ventricular ML and MP regions in our study.

There were several limitations of this study. The study was included a small number of cats with ATE. Measuring only radial strain was another limitation of this study. It is possible that measurement of circumferential and longitudinal strain will add useful information to the results obtained in this study. We obtained only a parasternal short-axis view in this study. Because, the vast majority of cats with ATE experience severe pain and respiratory distress, which makes any medical procedure and clinical examination difficult including echocardiography. A parasternal short-axis view may be quick guidance to interpret the echocardiographic information and relates it to the clinical context in cats with ATE. These limitations should be overcome in future investigations.

In conclusion, we found that radial peak systolic MP strain value of both HCM groups and MP strain value of IVS-HCM group were significantly lower in cats with ATE than in controls. Our results showed that MP strain values were decreased in the LV, regardless of which wall thickened in HCM cats. The detection of the various regional strain levels may play a significant role in the development of ATE in cats. The therapeutic use of this discovery might help us comprehend the pathophysiology of ATE. Future research with additional animals and strain values from various plains will help us to determine whether LV distribution fibrosis in ATE patients has clinical and pathophysiological importance in cats with HCM. Because LVTs sometimes go unnoticed until symptoms appear or are discovered inadvertently, it is prudent to characterize HCM patients based on the risk of thrombus development using echocardiography. Reduced

ML and MP strain can be a useful marker in cats with HCM where the clinician is in doubt whether they will develop a potential LVT.

Acknowledgements

This article is extracted from master thesis dissertation entitled "Evaluation of Left Ventricular Contraction Functions by Echocardiographic Examination in Cats Developing Arterial Thromboembolism" supervised by Associate Professor İdil BAŞTAN Ankara University.

Financial Support

This research received no grant from any funding agency/sector.

Ethical Statement

This study was approved by the Ankara University Animal Experiments Local Ethics Committee (Approval No: 2019-15-133).

Conflict of Interest

The authors declared that there is no conflict of interest.

Author Contributions

İB and RE conceived and planned the study. OST, İB and RE carried out the experiments. DÖ did statistics. All authors contributed to the interpretation of the results. İB took the lead in writing the manuscript. All authors provided critical feedback and helped shape the research, analysis and manuscript.

Data Availability Statement

The data supporting this study's findings are available from the corresponding author upon reasonable request.

Animal Welfare

The authors confirm that they have adhered to ARRIVE Guidelines to protect animals used for scientific purposes.

References

1. **Ambale-Venkatesh B, Lima JA** (2015): *Cardiac MRI: a central prognostic tool in myocardial fibrosis*. *Nat Rev Cardiol*, **12**, 18-29.
2. **Asinger RW, Mikell FL, Elsperger J, et al** (1981): *Incidence of left-ventricular thrombosis after acute transmural myocardial infarction. Serial evaluation by two-dimensional echocardiography*. *New Eng J Med*, **305**, 297-302.
3. **Biswas M, Sudhakar S, Nanda NC** (2013): *Two- and three-dimensional speckle tracking echocardiography: clinical applications and future directions*. *Echocardiography*, **30**, 88-105.
4. **Bonagura JD, Lehmkuhl LB** (2006): *Cardiomyopathy*. 1527-1548. In: Stephen J. Birchard, Robert G. Sherding (Ed), *Saunders Manual of Small Animal Practice*. 3rd ed, W.B. Saunders.

5. **Borgeat K, Wright J, Garrod O, et al** (2014): *Arterial thromboembolism in 250 cats in general practice: 2004–2012*. *J Vet Intern Med*, **28**, 102–108.
6. **Butz T, van Buuren F, Mellwig KP, et al** (2011): *Two-dimensional strain analysis of the global and regional myocardial function for the differentiation of pathologic and physiologic left ventricular hypertrophy: a study in athletes and in patients with hypertrophic cardiomyopathy*. *Int J Cardiovasc Imaging*, **27**, 91–100.
7. **Carasso S, Yang H, Woo A, et al** (2010): *Diastolic myocardial mechanics in hypertrophic cardiomyopathy*. *J Am Soc Echocardiogr*, **23**, 164–171.
8. **Chetboul V, Serres F, Gouni V, et al** (2008): *Noninvasive assessment of systolic left ventricular torsion by 2-dimensional speckle tracking imaging in the awake dog: repeatability, reproducibility, and comparison with tissue Doppler imaging variables*. *ACVIM*, **22**, 342–350.
9. **Choudhury L, Mahrholdt H, Wagner A, et al** (2002): *Myocardial scarring in asymptomatic or mildly symptomatic patients with hypertrophic cardiomyopathy*. *Journal of the American College of Cardiology*, **1**, 2156–2164.
10. **Delewi R, Nijveldt R, Hirsch A, et al** (2012): *Left ventricular thrombus formation after acute myocardial infarction as assessed by cardiovascular magnetic resonance imaging*. *Eur J Radiol*, **81**, 3900–3904.
11. **Eijgenraam TR, Silljé HHW, de Boer RA** (2020): *Current understanding of fibrosis in genetic cardiomyopathies*. *Trends Cardiovasc Med*, **30**, 353–361.
12. **Garceau P, Carasso S, Woo A, et al** (2012): *Evaluation of left ventricular relaxation and filling pressures in obstructive hypertrophic cardiomyopathy: comparison between invasive hemodynamics and two-dimensional speckle tracking*. *Echocardiography*, **29**, 934–942.
13. **Guillaumin J, Gibson RM, Goy-Thollot I, et al** (2019): *Thrombolysis with tissue plasminogen activator (TPA) in feline acute aortic thromboembolism: a retrospective study of 16 cases*. *J Feline Med Surg*, **21**, 340–346.
14. **Kim RJ, Judd RM** (2003): *Gadolinium-enhanced magnetic resonance imaging in hypertrophic cardiomyopathy: in vivo imaging of the pathologic substrate for premature cardiac death?* *J Am Coll Cardiol*, **41**, 1568–1572.
15. **Kong P, Christia P, Frangogiannis NG** (2014): *The pathogenesis of cardiac fibrosis*. *Cell Mol Life Sci*, **71**, 549–574.
16. **Liu T, Song D, Dong J, et al** (2017): *Current Understanding of the Pathophysiology of Myocardial Fibrosis and Its Quantitative Assessment in Heart Failure*. *Frontiers in Physiology*, **24**, 238.
17. **Marian AJ, Braunwald E** (2017): *Hypertrophic Cardiomyopathy*. *Circ Res*, **121**, 749–770.
18. **Mizuguchi Y, Oishi Y, Miyoshi H, et al** (2008): *The functional role of longitudinal, circumferential, and radial myocardial deformation for regulating the early impairment of left ventricular contraction and relaxation in patients with cardiovascular risk factors: a study with two-dimensional strain imaging*. *J Am Soc Echocardiogr*, **21**, 1138–1144.
19. **Mizuguchi Y, Oishi Y, Miyoshi H, et al** (2010): *Concentric left ventricular hypertrophy brings deterioration of systolic longitudinal, circumferential and radial myocardial deformation in hypertensive patients with preserved left ventricular pump function*. *J Cardiol*, **55**, 23–33.
20. **Olsen FJ, Pedersen S, Galatius S, et al** (2020): *Association between regional longitudinal strain and left ventricular thrombus formation following acute myocardial infarction*. *Int J Cardiovasc Imaging*, **36**, 1271–1281.
21. **Popović ZB, Kwon DH, Mishra M, et al** (2008): *Association between regional ventricular function and myocardial fibrosis in hypertrophic cardiomyopathy assessed by speckle tracking echocardiography and delayed hyperenhancement magnetic resonance imaging*. *J Am Soc Echocardiogr*, **21**, 1299–1305.
22. **Rush JE, Freeman LM, Fenollosa NK, et al** (2002): *Population and survival characteristics of cats with hypertrophic cardio-myopathy: 260 cases (1990-1999)*. *J Am Vet Med Assoc*, **220**, 202–207.
23. **Saito M, Okayama H, Yoshii T, et al** (2012): *Clinical significance of global two-dimensional strain as a surrogate parameter of myocardial fibrosis and cardiac events in patients with hypertrophic cardiomyopathy*. *Eur Heart J*, **13**, 617–623.
24. **Sasaki K, Sakata K, Kachi E, et al** (1998): *Sequential changes in cardiac structure and function in patients with Duchenne type muscular dystrophy: a two-dimensional echocardiographic study*. *Am Heart J*, **135**, 937–944.
25. **Smith SA, Tobias AH** (2004): *Feline arterial thromboembolism: an update*. *Vet Clin North Am Small Anim Pract*, **34**, 1245–1271.
26. **Sugimoto K, Fujii Y, Sunahara H, et al** (2015): *Assessment of left ventricular longitudinal function in cats with subclinical hypertrophic cardiomyopathy using tissue Doppler imaging and speckle tracking echocardiography*. *J Vet Med Sci*, **77**, 1101–1108.
27. **Suzuki R, Mochizuki Y, Yoshimatsu H, et al** (2017): *Determination of multidirectional myocardial deformations in cats with hypertrophic cardiomyopathy by using two-dimensional speckle-tracking echocardiography*. *J Feline Med Surg*, **19**, 1283–1289.
28. **Suzuki R, Mochizuki Y, Yoshimatsu H, et al** (2019): *Layer-specific myocardial function in asymptomatic cats with obstructive hypertrophic cardiomyopathy assessed using 2-dimensional speckle-tracking echocardiography*. *J Vet Intern Med*, **33**, 37–45.
29. **Varnava AM, Elliott PM, Sharma S, et al** (2000): *Hypertrophic cardiomyopathy: the interrelation of disarray, fibrosis, and small vessel disease*. *Heart*, **84**, 476–482.
30. **Wang J, Khoury DS, Yue Y, et al** (2008): *Preserved left ventricular twist and circumferential deformation, but depressed longitudinal and radial deformation in patients with diastolic heart failure*. *Eur Heart J*, **29**, 1283–1289.
31. **Wess G, Keller LJ, Klausnitzer M, et al** (2011): *Comparison of longitudinal myocardial tissue velocity, strain, and strain rate measured by two-dimensional speckle tracking and by color tissue Doppler imaging in healthy dogs*. *J Vet Cardiol*, **13**, 31–43.

Publisher's Note

All claims expressed in this article are solely those of the authors and do not necessarily represent those of their affiliated organizations, or those of the publisher, the editors and the reviewers. Any product that may be evaluated in this article, or claim that may be made by its manufacturer, is not guaranteed or endorsed by the publisher.
